



Leon Engineering

INDUSTRIAL WEIGHING AND PROCESS AUTOMATION S.A.





LOAD CELLS
Vishay Tedeo-Huntleigh

Vishay Revere Transducers

Tedea – Huntleigh Load Cells

- [Aluminum Single Point](#)
- [Stainless Steel Single Point](#)
- [Single and Double ended Beams](#)
- [Compression](#)
- [Fluid Damped](#)
- [S - Type](#)

[1004](#)

[1022](#)

[1040/1041](#)

[1042](#)

[1241](#)

[1242](#)

[1250](#)

[1252](#)

[1330](#)

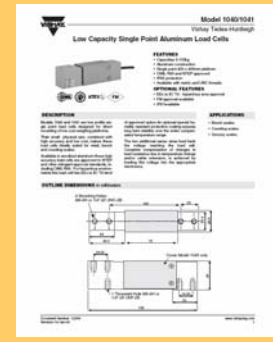
[1260](#)

[1263](#)

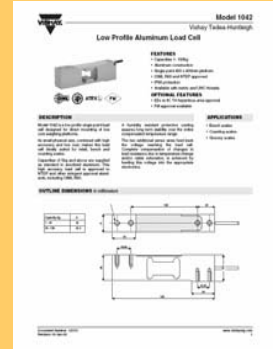
[1265](#)

[1320](#)

[Main Menu](#)



| Model | Description | Designation | Environmental protection | Capacities (t) |
|----------|--|--|--------------------------|--|
| 040/1041 | Single point, low profile, aluminum load cell. | Retail, bench, counting, platform and postal scales. | IP 65 (IP 67 optional) | 5 / 7 / 10 / 15 / 20 30 / 50 / 75 / 100 kg |



| Model | Description | Designation | Environmental protection | Capacities (t) |
|-------|---|--|--------------------------|--|
| 1042 | Single point, low profile aluminum load cell. | Retail, bench, counting, platform and postal scales. | IP 66 | 1 / 3 / 5 / 7 / 10 / 15 / 20 / 30 / 50 / 75 / 100 kg |



Model 1241 Single Point Load Cells

Features

- Capacities: 50 - 250 kg (110 - 550 lbs)
- Aluminum Construction
- Compliance and only 0.02%
- 100% humidity resistant protection (IP54)
- Low profile design
- Low profile (1 1/2" tall) in height
- Mounting holes for 10 A cells
- Available in metric
- Mounting holes for added stability

Model 1241 is a low profile, aluminum, off-center load cell designed for direct mounting to a weighing platform, hanging scale, or other eccentric loading applications.

As one of the most compact designs available for these capacities and when frequently used in outdoor or high-vibration environments, this design is ideal for applications where space is limited.

This high accuracy load cell is Factory Mutual and FMMA Class II approved. When operated at ambient temperatures, it has a load line of 0.02% maximum over full-scale range of operation.

A fully humidity resistant protection coating provides long-term stability even under harsh environmental and operating conditions.

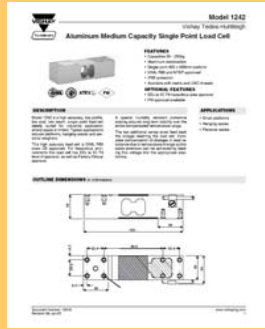
Standard support for installation is available for applications requiring additional protection.

Performance: with models ranging from 50 to 250 kg capacities, is the world's largest manufacturer of aluminum load cells.

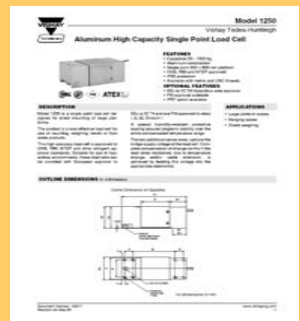
WISKEY
Weighing Systems
INCORPORATED

| Model | Capacity | Accuracy | Material | Height | Width | Depth | Weight |
|----------|----------|----------|----------|--------|-------|-------|---------|
| 1241-50 | 50 kg | 0.02% | Aluminum | 1.5" | 1.5" | 1.5" | 0.15 kg |
| 1241-100 | 100 kg | 0.02% | Aluminum | 1.5" | 1.5" | 1.5" | 0.30 kg |
| 1241-150 | 150 kg | 0.02% | Aluminum | 1.5" | 1.5" | 1.5" | 0.45 kg |
| 1241-200 | 200 kg | 0.02% | Aluminum | 1.5" | 1.5" | 1.5" | 0.60 kg |
| 1241-250 | 250 kg | 0.02% | Aluminum | 1.5" | 1.5" | 1.5" | 0.75 kg |

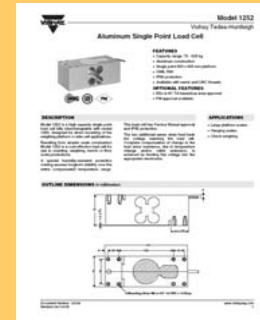
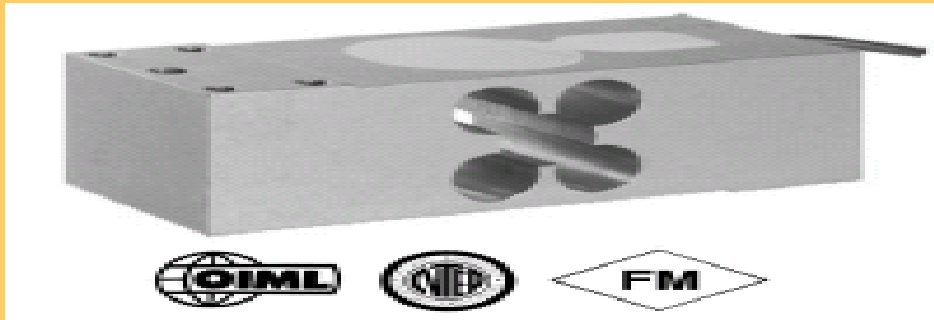
| Model | Description | Designation | Environmental protection | Capacities (t) |
|-------|---|--|--------------------------|-------------------------------|
| 1241 | Single point, low profile aluminum load cell. | For direct mounting to a weighing platform, hanging scale, or other eccentric loading applications | IP 54 (IP 65 optional) | 50 / 100 / 150 / 200 / 250 kg |



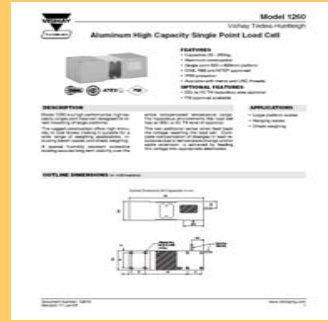
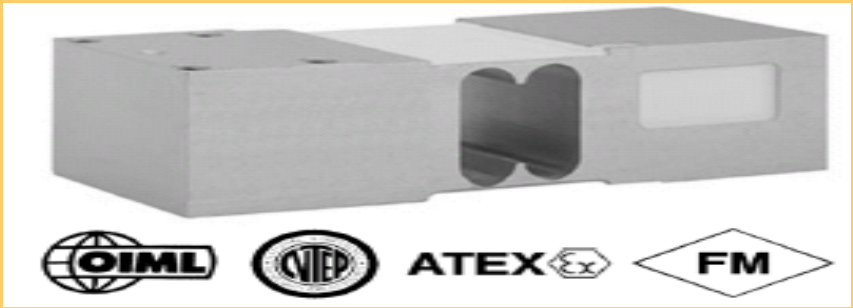
| Model | Description | Designation | Environmental protection | Capacities (t) |
|-------|---|--|--------------------------|-------------------------------|
| 1242 | Single point, medium capacity aluminum load cell. | Bench and hanging scales. Personal and medical weighing. | IP 66 | 50 / 100 / 150 / 200 / 250 kg |



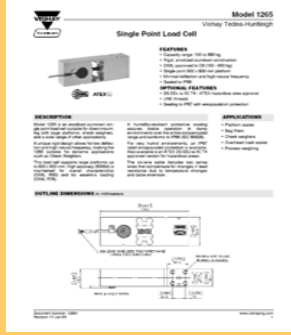
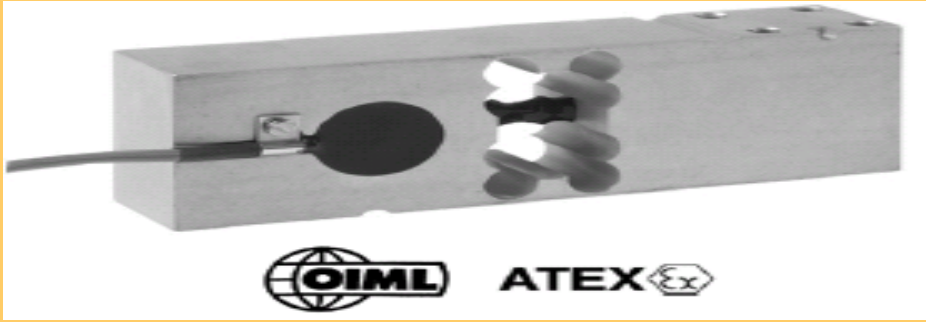
| Model | Description | Designation | Environmental protection | Capacities (t) |
|-------|--|---|--------------------------|--|
| 1250 | High capacity, single point load cell. | Large platforms, bag fillers, medical weighing, process weighing. | IP 65 (IP 67 optional) | 50 / 75 / 100 / 150 / 200 / 250 / 300 / 500 kg |



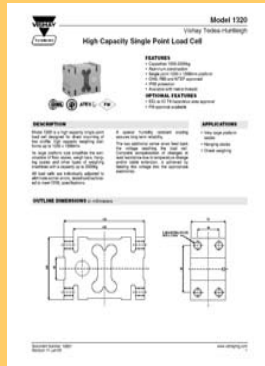
| Model | Description | Designation | Environmental protection | Capacities (t) |
|-------|---|---|--------------------------|-------------------------------------|
| 1252 | High capacity, single point aluminum load cell. | Large platforms, bag fillers, medical weighing, process weighing. | IP 66 | 75 / 100 / 150 / 200 / 250 / 300 kg |



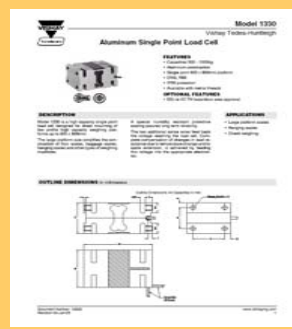
| Model | Description | Designation | Environmental protection | Capacities (t) |
|-------|---|---|--------------------------|--|
| 1260 | High capacity, single point aluminum load cell. | Large platforms, bag fillers, medical weighing, process weighing. | IP 66 | 50 / 75 / 100 / 150 250 / 300 / 500 / 635 kg |



| Model | Description | Designation | Environmental protection | Capacities (t) |
|-------|----------------------------------|--|--------------------------|--|
| 1265 | Single point aluminum load cell. | Platform scales, bag fillers, check weighers, overhead track scales, process weighing. | IP 66 (IP 67 optional) | 100 / 150 / 250 / 300 / 500 / 635 / 660 kg |



| Model | Description | Designation | Environmental protection | Capacities (t) |
|-------|---|--|--------------------------|----------------|
| 1320 | High capacity, single point aluminum load cell. | Very big platform scales, hopper and hanging scales. Process weighing. | IP 66 | 1t / 1.5 / 2 t |



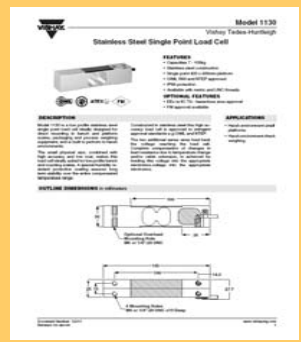
| Model | Description | Designation | Environmental protection | Capacities (t) |
|-------|---|--|--------------------------|--------------------|
| 1330 | High capacity, single point aluminum load cell. | Very big platform scales, hopper and hanging scales. Process weighing. | IP 66 | 500 / 750 / 1000 k |

[1130](#)

[1142](#)

[1510](#)

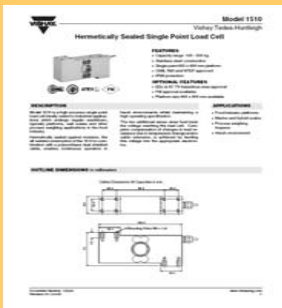
[Main Menu](#)



| Model | Description | Designation | Environmental protection | Capacities (t) |
|-------|--|--|--------------------------|---|
| 1130 | Single point, stainless steel load cell. | Retail, counting and platform scales. Food industry. | IP 66 | 7 / 15 / 20 / 30 / 30 / 50 / 75 / 100kg |



| Model | Description | Designation | Environmental protection | Capacities (t) |
|-------|---|--|--------------------------|----------------------------|
| 1142 | Single Point St.St. load cell for platform size 400x400 mm, approved to OIML C3 | Retail, counting and platform scales. Food industry. | IP 67 | 20 / 30 / 50 / 75 / 100 kg |



| Model | Description | Designation | Environmental protection | Capacities (t) |
|-------|---|---|--------------------------|--------------------|
| 1510 | Single point stainless steel, hermetically sealed load cell | Bench, hopper, slaughter house and gas bottles scales. Food industry. Hostile environments. | IP 68 | 100 / 250 / 500 kg |

- Shear Beams

[3410/3411](#)

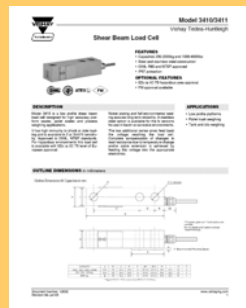
[3510](#)

[3520](#)

- Bending Beam

[355](#)

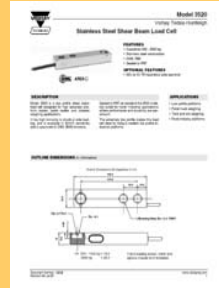
[Main Menu](#)



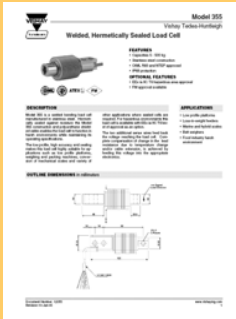
| Model | Description | Designation | Environmental protection | Capacities (Kg) |
|-----------|----------------------|---|--------------------------|----------------------|
| 3410/3411 | Shear Beam Load Cell | Low profile platform scales, pallet scales, overhead track scales, process weighing | IP 67 | 0.25 / 0.5 / 1 / 2 t |



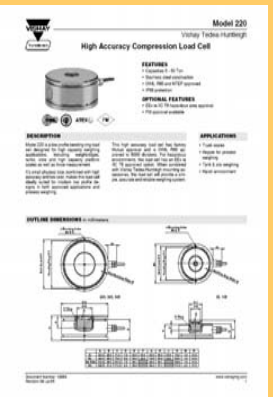
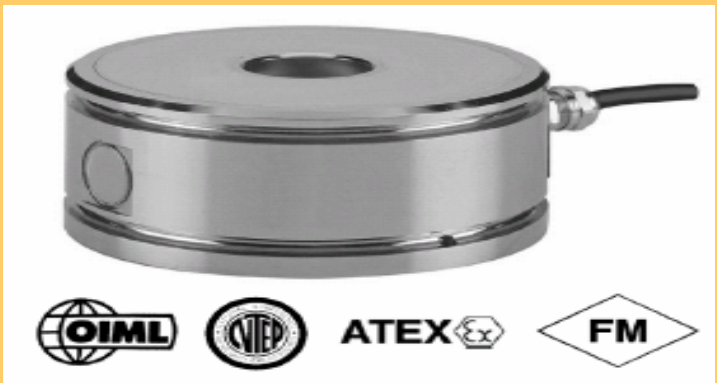
| Model | Description | Designation | Environmental protection | Capacities (Kg) |
|-------|--|---|--------------------------|-----------------|
| 3510 | Shear beam welded seal, stainless steel load cell. | Low profile platform scales, pallet truck weighers, tanks and silos, hostile environments, food industry, pit mounted platform scales | IP 68 | 5 t |



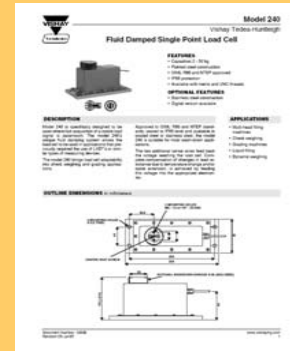
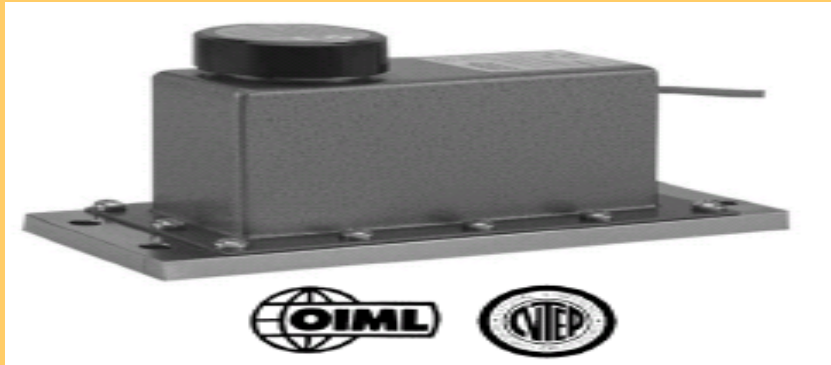
| Model | Description | Designation | Environmental protection | Capacities (Kg) |
|-------|----------------------|---|--------------------------|---------------------|
| 3520 | Shear Beam Load Cell | Low profile platform scales, pallet truck weighers, tanks and silos, hostile environments, food industry, pit mounted platform scales | IP 67 | 0.3 / 0.5 / 1 / 1.2 |
| | | | | 0.5 / 1 / 2 t |



| Model | Description | Designation | Environmental protection | Capacities (t) |
|-------|-------------------------------------|---|--------------------------|---|
| 355 | Single ended bending beam load cell | Low-profile platforms, loss-in-weight feeders, marine and hybrid scales, belt weighers, food industry, harsh environment. | IP 68 | 5 / 10 / 20 / 50 100 / 200 / 250 500 kg |



| Model | Description | Designation | Environmental protection | Capacities (t) |
|-------|--------------------------------------|---|--------------------------|----------------|
| 220 | High accuracy compression load cell. | Weighbridges, hopper weighing, tank and silo weighing, large industrial applications, harsh environment | IP 68 | 5 t |
| | | | | 20 / 30 t |



| Model | Description | Designation | Environmental protection | Capacities (t) |
|-------|--------------------------------------|--|--------------------------|-----------------------------------|
| 240 | Fluid damped single point load cell. | Check weighing, multi-head weighers, grading machines, liquid filling, dynamic weighing. | IP 66 | 5 / 7 / 10 / 15 / 20 / 30 / 50 kg |



| Model | Description | Designation | Environmental protection | Capacities (t) |
|-------|-------------------|---|--------------------------|----------------|
| 620 | S-Type load cell. | Hybrid scales, hopper weighing, belt weighers, dynamometers, material testing machines, lever arm conversions, vibratory feeding equipment, harsh environment | IP 68 | 5 t |

Revere Load Cells

- [Compression](#)
- [Double ended Shear Beams](#)
- [Single ended Shear Beams](#)
- [S – Type \(Universal Cells\)](#)
- [Aluminum Single Point](#)
- [Stainless Steel Single Point](#)
- [Smart \(Digital\) Cells](#)



| Model | Description | Designation | Environmental protection | Capacities (Kg) |
|-------|--|---|--------------------------|-----------------|
| CSP-M | Compression load cell (multi - column, low profile, stainless steel) | Road, rail weighbridges and process weighing applications | IP 66 / IP 68 | 10 t |
| | | | | 25 t |
| | | | | 40 t |
| | | | | 60 t |



| | | | | |
|-----|---|---|---------------|-------------|
| ASC | Canister (single - column, stainless steel) | Road, rail weighbridges, silo hopper weighing | IP 66 / IP 68 | 30 t |
| | | | | 40 t |
| | | | | 50 t |
| RLC | Ring Torsion Load Cell (low profile, stainless steel) | Small and medium platform scales, belt scales, silo hopper weighing | IP 66 / IP 68 | 0.25 t |
| | | | | 0.5 / 1 t |
| | | | | 2 / 3.5 / 5 |
| | | High capacity platforms as well as process weighing applications | IP 66 / IP 68 | 10 t |
| | | | | 28 t / 60T |



5223 DOUBLE-LINK BEAM LOAD CELL

DESCRIPTION:
The 5223 is a non-plated, nickel plated, carbon supported double ended shear beam.

This product is suitable for a wide range of truck and rail scales. It is designed for the parallel link loading, characterized by heavy, unloading, impacts, to the full administration when compared to other loading techniques.

Fully welded stainless steel body ensures high environmental strength and provides that additional safety leading to safe, accurate, maintenance-free service life.

These products meet the stringent strength and accuracy requirements throughout Europe.

REVERSE TRANSDUCERS EUROPE

FEATURES:

- Nickel plated stainless
- Certified to OIML R110, NTEP
- Sealing IP67 (EN 60529)
- Low profile, self-checking and self-compensating
- Customised design especially for weighbridge use
- Customised output modules
- CAPACITIES: 50 - 500 kN



Model 5103
Vishay Revere

Double Ended Beam Load Cell

FEATURES:

- Capacity 50 to 200kN
- Low profile construction
- Nickel plated alloy steel construction
- Complies with EN 8470, NTEP and other standards
- Sealing IP67 (EN 60529)

OPTIONAL FEATURE:

- IP69 approved for use in hazardous locations

APPLICATIONS:

- Platform scales
- On-board weighing
- Hopper weighing
- Silo/hopper weighing

DESCRIPTION:
5103 construction in double ended, carbon loaded alloy steel body. The 5103 is constructed in nickel plated alloy steel.

These products are suitable for weighing impacts, low rate weighings and low impact.

OUTLINE DIMENSIONS in mm

| Model | Capacity | Length | Width | Height | Weight |
|----------|----------|--------|-------|--------|--------|
| 5103-50 | 50 kN | 100 | 40 | 40 | 1.5 |
| 5103-100 | 100 kN | 120 | 40 | 40 | 2.0 |
| 5103-150 | 150 kN | 140 | 40 | 40 | 2.5 |
| 5103-200 | 200 kN | 160 | 40 | 40 | 3.0 |

CONNECTIONS:
Load input: 4-wire (3-wire optional) 0-10V
Output: 4-wire, 5-wire, 6-wire, 8-wire
Output: 4-wire, 5-wire, 6-wire, 8-wire
Output: 4-wire, 5-wire, 6-wire, 8-wire
Output: 4-wire, 5-wire, 6-wire, 8-wire

Revere Transducers Europe

| | | | | |
|------|--|--|-------|---------------|
| 5223 | Double - Link Shear Beam | Truck and rail scales | IP 67 | 22.7 / 29.5 t |
| | | | | 45.4 t |
| 5103 | Double ended shear beam (nickel plated alloy steel construction) | Platform scales, weighbridges, on-board weighing, silo hopper weighing | IP 67 | 9.1 t |
| | | | | 45.4 t |



9102

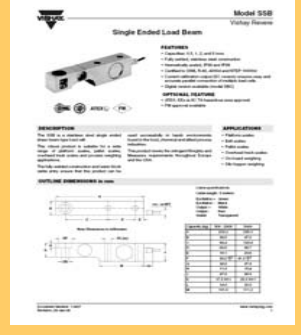
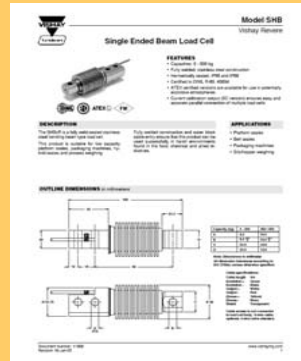
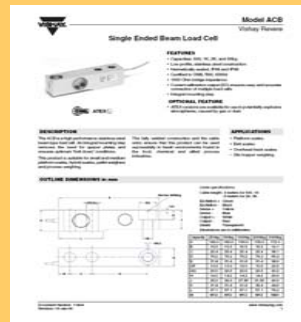
5123

9123

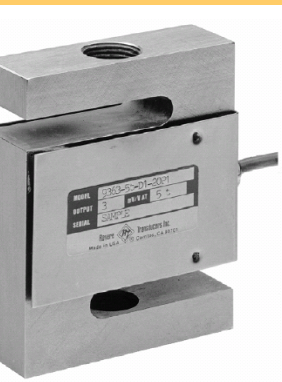
ACB

SHBxR

SSB



| | | | | |
|---------|---|---|---------------|--------------|
| ACB | Single ended shear beam, (low profile, stainless steel) | Platform scales, belt scales, silo hopper weighing, overhead track scales | IP 66 / IP 68 | 0.5 / 1 t |
| | | | | 5 t |
| SHB x R | Single ended bending beam load cell. | Platform scales, belt scales, packaging machines, silo / hopper weighing | IP 66 / IP 68 | 10 / 20 t |
| | | | | 30 / 50 t |
| SSB | Single ended shear beam (fully welded, stainless steel) | Platform scales, belt scales, silo hopper weighing, overhead track scales, pallet scales, on-board weighing | IP 66 / IP 68 | 100 / 200 kg |
| | | | | 350 / 500 kg |
| SSB | Single ended shear beam (fully welded, stainless steel) | Platform scales, belt scales, silo hopper weighing, overhead track scales, pallet scales, on-board weighing | IP 66 / IP 68 | 0.5 / 1 t |
| | | | | 5 t |



9363 UNIVERSAL LOAD CELL

DESCRIPTION:

The 9363 is a new multi-purpose stainless steel S-type load cell which can be used either in tension or compression.

This product is suitable for a wide range of hybrid scales, overhead track scales, belt scales and process weighing applications.

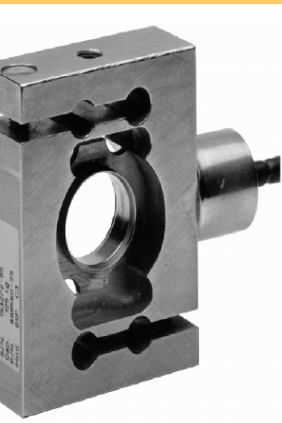
Reliable sealing is ensured by the proprietary TENSICAL sealing compound and additional mechanical protection of the strain gauge area.

This product meets the stringent Weights and Measures requirements throughout Europe.

REVERSE TRANSDUCERS EUROPE

FEATURES:

- Stainless steel construction
- Certified to OIML R60, 3606a
- Suitable for compression and tension applications
- Terminal output as standard
- CAPACITY: 50 - 50000 kg (100 - 20 M lb when available)



BSP UNIVERSAL LOAD CELL

DESCRIPTION:

The BSP is a stainless steel S-type load cell that can be used in either tension or compression.

This product is suitable for a wide range of hybrid scales, overhead track scales, belt scales and process weighing applications.

The fully welded construction and water block cable entry ensure that this product can be used successfully in the harshest environments found in the food, chemical and steel process industries.

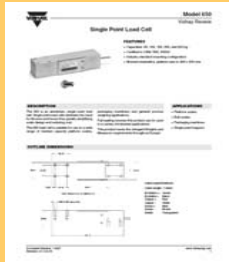
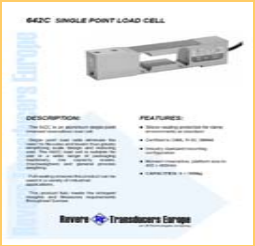
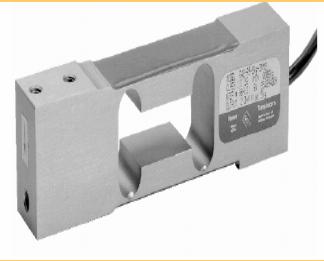
This product fully meets the stringent European Weights and Measures requirements through Europe.

REVERSE TRANSDUCERS EUROPE

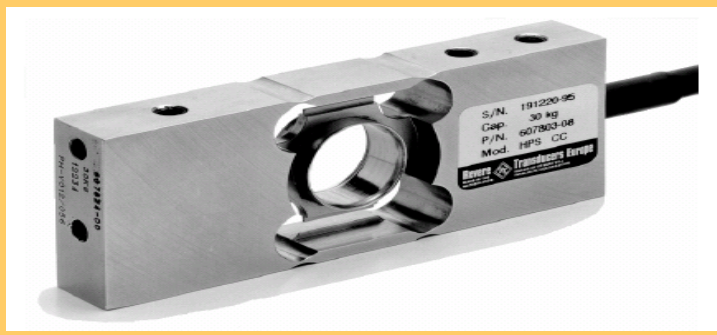
FEATURES:

- Fully welded, stainless steel construction
- Hermetically sealed, IP68 and IP69
- Certified to OIML R 60, 3606a
- Integrated overload stop (5% - 500 kg)
- ATEX certified versions are available for use in potentially explosive atmospheres
- Current calibration output (DC voltage) ensures easy and accurate periodic correction of multiple load cells
- CAPACITY: 50 - 5000 kg

| | | | | |
|------|---|---|---------------|--------------------------------|
| 9363 | S-Type, Stainless Steel | Wide range of hybrid scales, overhead track scales, belt scales and process weighing applications | IP 65 | 50 / 100 / 250 / 500 / 1000kg |
| | | | | 2.5 t / 5 t |
| | | | | 7.5 t |
| BSP | S - Type (Universal) load cell, stainless steel, tension or compression | Wide range of hybrid scales, overhead track scales, belt scales and process weighing applications | IP 66 / IP 68 | 50 / 125 / 250 / 500 / 1250 kg |
| | | | | 2.5 / 5 t |



| | | | | |
|-------|-------------------------------------|---|---------------|--|
| 640 | Single Point Load Cells in Aluminum | Packaging machinery, low capacity scales, checkweighers and general process weighing | IP 65 | 3 / 5 / 7 / 10 / 15 / 20 / 30 / 35 / 50 kg |
| 642 C | Single Point Load Cells in Aluminum | Packaging machinery, low capacity scales, checkweighers and general process weighing | IP 65 | 5 / 10 / 15 / 20 / 30 / 50 / 75 / 100 kg |
| 650 | Single Point / Platform cell. | Single point platforms, single point belt scales, single point hopper, packaging machines | IP 67 / IP 63 | 50 / 100 / 150 / 200 / 250 kg |
| 652 | Single Point Load Cells in Aluminum | Medium capacity platform scales, packaging machinery, general process weighing | IP 65 | 50 / 75 / 100 / 150 / 200 / 250 / 300 / 500 kg / 1 t |



HPS SINGLE POINT LOAD CELL

DESCRIPTION:

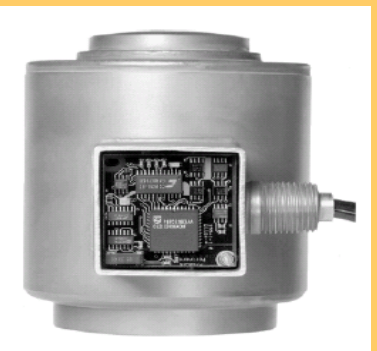
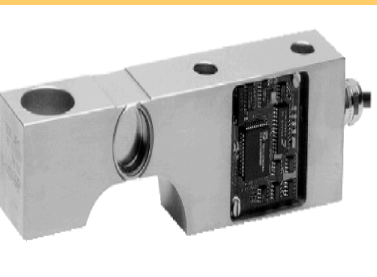
- The HPS is a unique fully welded all stainless steel single point moment measurement load cell.
- This product is suitable for use capacity platform scales, multi-head packaging machines, check weighers, loss-in-weight feeders, belt scales and general process weighing applications.
- The unique construction ensures that this product can be used in virtually any harsh environment that is not toxic, chemical and allied industries.
- This product meets the stringent requirements and Measures requirements throughout Europe.

FEATURES:

- Fully welded stainless steel construction
- Hermetically sealed, IP66 and IP68
- Certified to OIML R 111, 36062
- ATEX certified versions are available for use in potentially explosive atmospheres
- Comprehensive mounting hole facility
- Mounting instructions, platform size to 200 x 200mm
- CAPACITIES: 6 - 60kg

Revere Transducers Europe
An ISO 9001:2008 Certified Company

| | | | | |
|------------|---|---|----------------------|----------------------------|
| <p>HPS</p> | <p>Single Point Load Cells in Stainless Steel</p> | <p>Low capacity platform scales, multi head packaging machines, check weighers, loss in weight feeders, belt scales and general process weighing applications</p> | <p>IP 66 / IP 68</p> | <p>6 / 12 / 30 / 60 kg</p> |
|------------|---|---|----------------------|----------------------------|



| | | | | |
|-----|--|---|---------------|---------------|
| SBC | Stainless steel, single ended, shear beam load cell with a digital output signal | Medium capacity platform scales, pallet scales, overhead track scales and process weighing applications | IP 66 / IP 68 | 0.5 / 1 / 2 t |
| | | | | 5 t |
| SCC | Smart Compression Cell (multi-column, low profile, stainless steel, compression load cell with a digital output signal | Various types of road and rail weighbridges and process weighing | IP 66 / IP 68 | 10 t / 25 t |
| | | | | 40 t |
| DSC | Digital single column, low profile, stainless steel, compression load cell with a digital output signal | Various types of road and rail weighbridges and process weighing | IP 66 / IP 68 | 30 t |
| | | | | 40 t |
| | | | | 50 t |